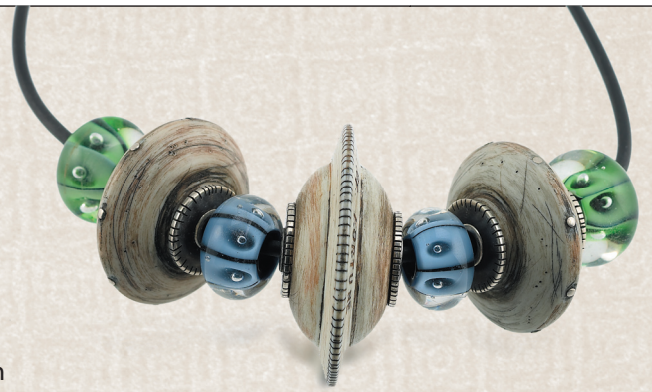


Lining Beads

Add an elegant, professional-looking finish to your beads by lining them with sterling using the Beadliner kit.



steps:

1. Using the **electronic digital caliper**, measure the length of the **bead**, then add 2mm more (i.e. for a 14mm bead, you'll be cutting a 16mm-long piece of tubing); mark the length on the **fine silver seamless tubing** with the sharp tip of the caliper or with a **ruler** and marker.
2. Secure the tubing in the **tubing cutter**. Load a 3/0 or smaller **Laser Blade™** into the **saw frame** and saw the tubing along the mark, using **Bur-Life®** as needed to keep the blade cool. Once you make several passes on the tubing, you should be able to gently twist and break the tubing.
3. Use a **Friedrich Dick needle file** to smooth both ends of the tubing. Twist the tip of the **craft knife** around the *inside* of both ends of the tubing to remove any rough edges so that the tubing will fit around the dies.
4. Run the tubing through the bead. Make sure there is about 1mm of tubing protruding from both ends of the bead.
5. Load the 1/8" dies from the **Beadliner kit** (to match the 1/8" seamless tubing) onto both uprights of the press. Fit the bead over the die on the upright *farthest* from the large fine-tune dial. Still holding the bead in place with one hand, turn the small "course" dial on the base of the press with the other hand, moving the upright closer to the bead; continue to turn the course dial until it finds a seat closest to the bead, then tighten the course dial once more. .
6. While still holding the bead in place, begin turning the large fine-tune dial until the bead is loosely clamped in between the two dies. The bead should be able to spin freely.
7. Continue to make very short turns of the fine-tune dial while simultaneously twisting the bead (twisting the bead will keep the glass from breaking). Adjust the course dial when necessary. Continue to make small turns with the fine-tune dial and twist the bead until the bead will no longer spin.
8. Open the press using the course dial and remove the bead. **NOTE:** Sometimes the dies will remain lodged in the ends of the bead; if this occurs, gently remove the dies with your fingers.

supplies:

Description	Order #	Qty.
Beadliner kit	111-650	1 kit
.999 fine silver seamless tubing; 3/32"	100-930	as needed
.999 fine silver seamless tubing; 1/8"	100-931	as needed
.999 fine silver seamless tubing; 5/32"	100-932	as needed
.999 fine silver seamless tubing; 3/16"	100-933	as needed
Ultralight Swiss saw frame; 80mm	110-058	2
Laser Blade™ Most Popular Assortment	110-219	1 pkg.
Friedrich Dick needle file set; 6 1/4"L	114-794	1 set
Bergeon tubing cutter	113-000	1
Beads	—	variety
Electronic digital caliper; 4"	115-189	1
Jewelry maker's ruler	116-022/10	1
Bur-Life®; 1.9 oz. stick	117-003	1
Craft knife	—	1

IMPORTANT!

Always wear your **Citation safety glasses** when cutting metal tubing.



Products. Service. Know-how.

Sharing your passion for making jewelry.

800.545.6566 riogrande.com