



www.beadsbaublesandjewels.com

1404-2

Designer Laura Timmons uses recycled denim to create a bracelet with crystal mesh.

For More Information Visit:
SWAROVSKI ELEMENTS
www.create-your-style.com

Watch the video for this project online at: <http://youtu.be/95mjbRtwGPU>

Crystal Denim: “Hot Couture”©

By Create Your Style with SWAROVSKI ELEMENTS Ambassador
Laura Timmons of **Vintage Moon Creations™**

SWAROVSKI ELEMENTS Needed:

*40 001 005 081 292, Crystal Mesh Hotfix, Sunflower

Additional Supplies:

- *An old pair of jeans
- *Embroidery thread – color of choice
- *Needle
- *scissors
- *Iron
- *iron appropriate surface
- *Paper Towels

Tips:

- ****Most importantly – when heating up your crystal mesh – remember that you crystal product itself will be very, very hot – and you can burn yourself! Always allow it to cool, prior to testing!
- *The older the pair of jeans the better
- *Be sure your iron is at its hottest setting, no steam.
- *When cutting your denim, because of the thickness of the fabric at the waistband, just be VERY careful not to cut yourself!

Getting Started:

First you will cut your denim waistband off of your jeans. Be sure to cut as close to the edge of the waistband that you can. Once it is cut off, go back and cut off the belt loops, if there are any. It doesn't really matter if you cut off part of fabric on the surface of the waistband while doing this, it just adds to the effect, and will most likely be covered up by your crystals. Measure how long you will want your bracelet, and cut from the button shank the length of denim that you want. You can make a cut into the middle portion of the end of your denim for the button hole.

Almost There:

Without pulling off the plastic strip holding your crystals in place, cut the desired length of mesh you need for your bracelet. Place directly onto the denim – crystal side up. Place the bracelet onto your iron safe surface, and place a paper towel onto the top of your bracelet. Hold the iron directly onto the paper towel, with the crystal mesh below. Hold the iron there for about 2 minutes to ensure that the hotfix product under the mesh, heats up enough to adhere to your denim. After you allow the crystals to cool down some, you can test your mesh to make sure that it has adhered properly. If there are any sections that haven't adhered properly, you can reheat that area.

The Finishing Touch:

Once you are sure that all of your crystal mesh has adhered properly, you can pull the plastic strip on top of the mesh off. Now you are ready to finish off your bracelet. By using your embroidery thread, stitch small stitches around the button hole that you cut. You may also want to stitch along the end of your piece create an even more finished look. Don't worry if they are perfect – the more haphazard they are – the cooler your bracelet will look!

©2010Vintage Moon Creations, Laura R. Timmons, vmc@kc.rr.com, www.vintagemoon.net

“Sparkle” your imagination....”Embellish” your creativity!



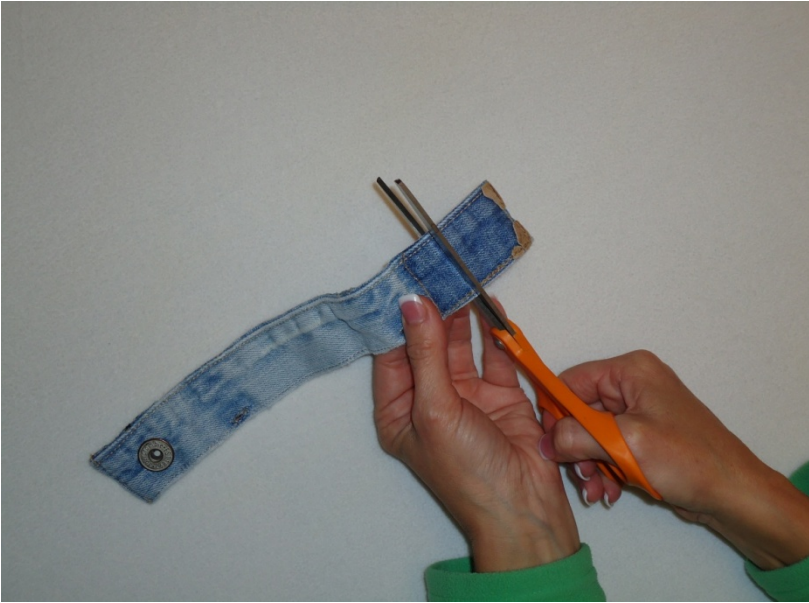
Project Steps:

Step 1: Cut your denim waistband off of an old pair of jeans.

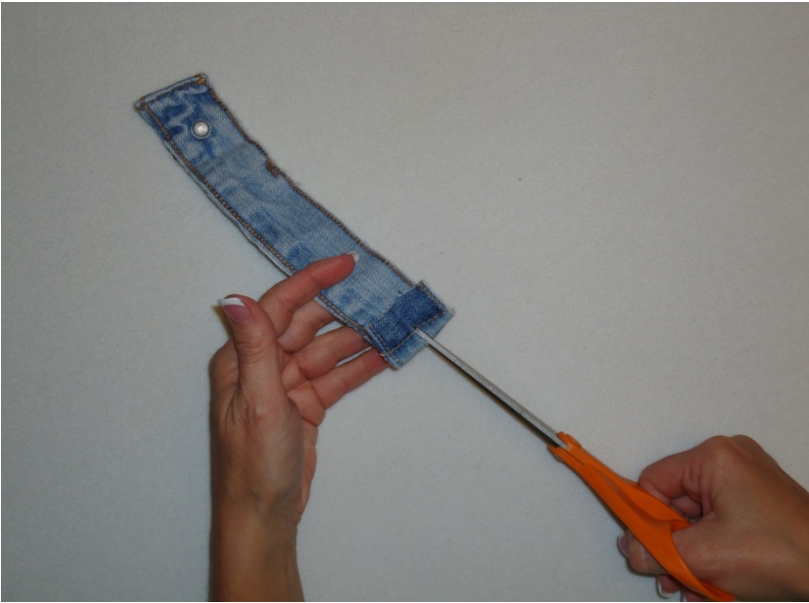


Step 2: Cut the belt loops off, and cut the desired length of your bracelet, measuring from the button.

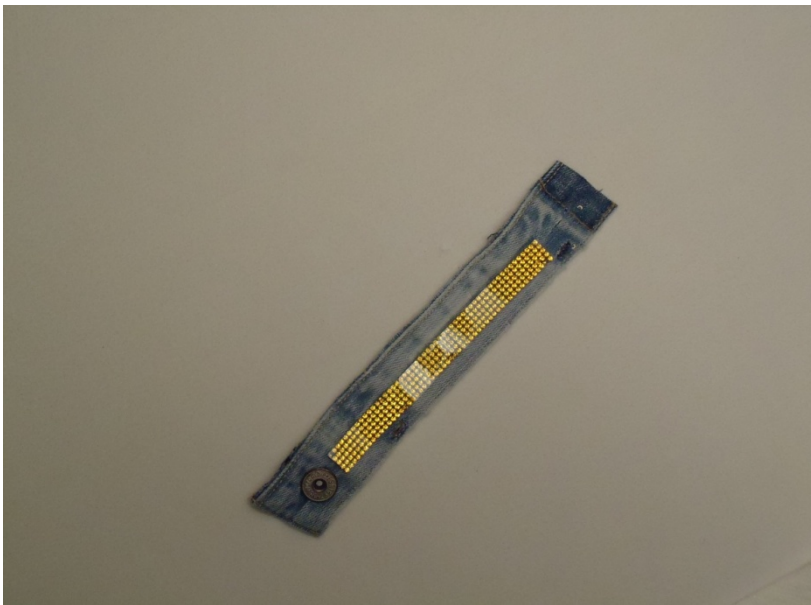
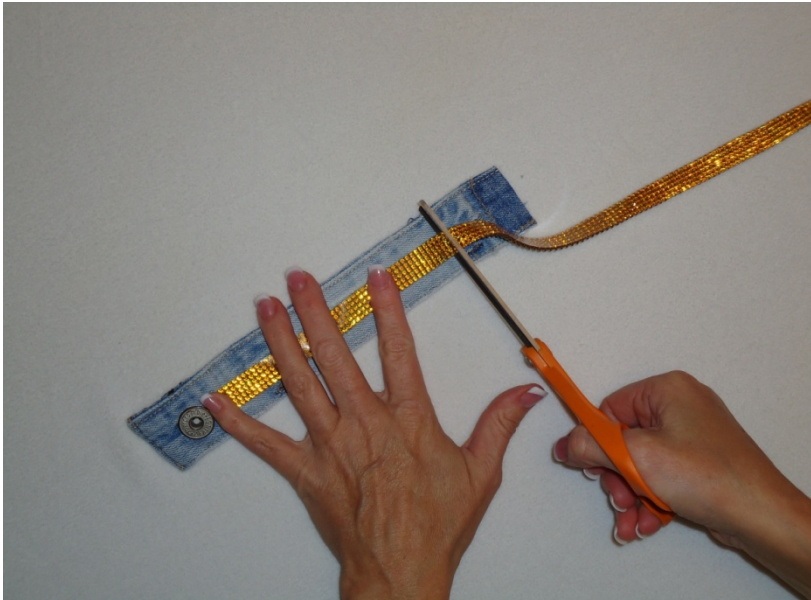




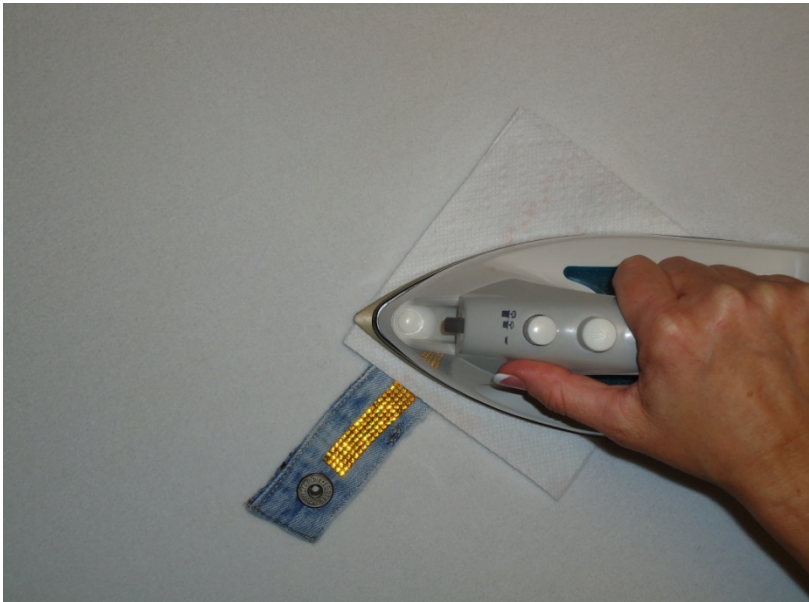
Step 3: Cut a button hole on the opposite side.



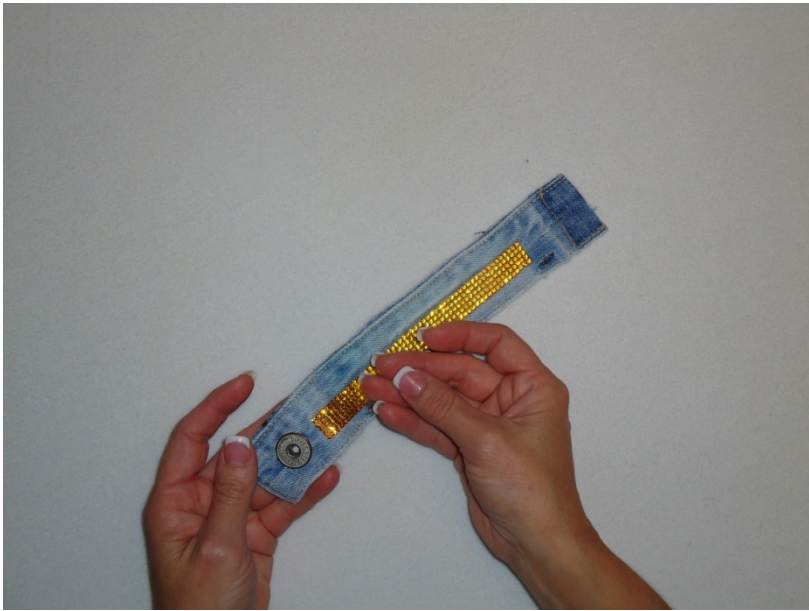
Step 4: Cut your desired length of Crystal Mesh, leaving the plastic on top of the crystal still on.



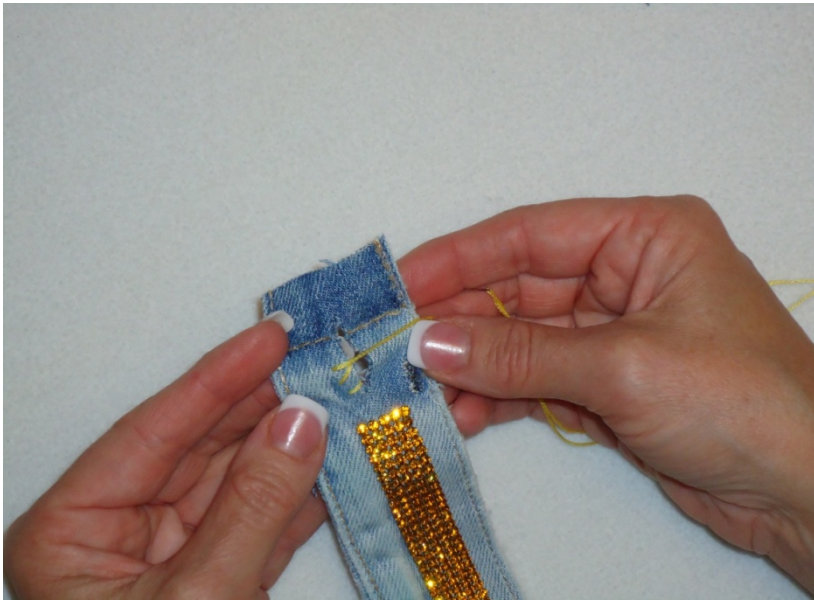
Step 5: With an iron on its hottest setting (no steam), place your Crystal Mesh in place on your denim bracelet – putting a paper towel on top of that-iron your crystal mesh onto your denim bracelet. Give it a good 2 minutes or so. You can test your crystal some, while you are working, just be sure to let your crystal cool down, before you touch it.

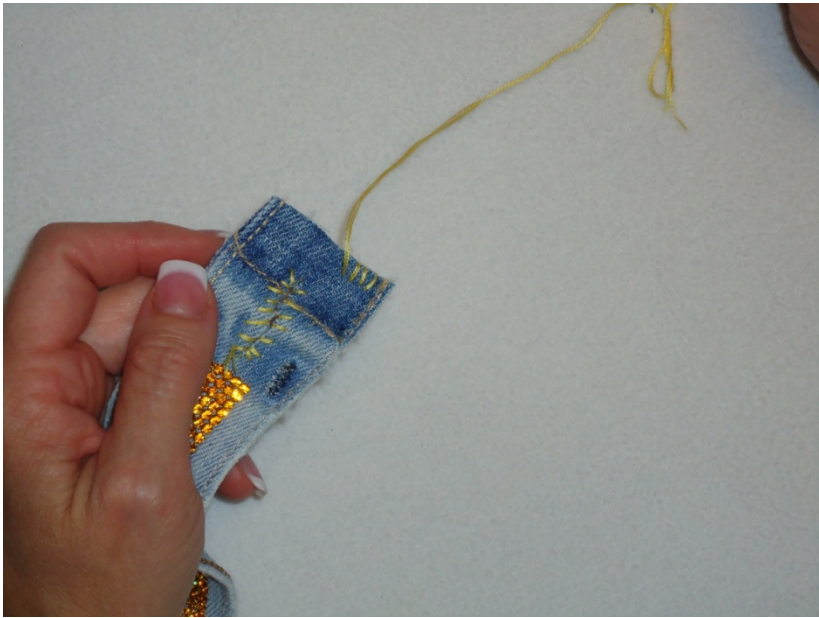


Step 6: Pull the plastic off of your Crystal Mesh.



Step 7: Now with embroidery thread, stitch the button hold and end of your bracelet.





Guest:



Laura Timmons

Copyright © 2011 Beads Baubles and Jewels, All Rights Reserved