



# Fee Fi Faux Fabulous

*Mimicking enamel and metal with polymer and mixed media*

**A floral focal pendant project**

with Christi Friesen

*For this project you will need:*

- . **polymer clay** – I recommend Premo™ for this project! A great clay for sculpting: (I used Pomegranate and Silver)
- . **aluminum foil**: just a small piece, for texture
- . **headpins**: five ball-tipped headpins, I suggest copper
- . **glue**: PolyBonder™ (optional)
- . **embossing powder**: black, or any dark color
- . **acrylic paint**: black
- . **glaze**: Sculpey™ Gloss Glaze
- . **metal coating & patina**: I recommend Swellegant™ Silver Metal Coating and Swellegant™ Darkening Patina and Swellegant™ Clear Sealant
- . **tools**: cutting blade, wire cutters, pliers, sculpting tools (I used my favorite tool the “Gotta Have It” tool), needle tool, cotton-tipped swab, paintbrush
- . **equipment**: clay conditioning machine, oven, oven thermometer

Metal and enamel are both beautiful looking materials, especially for jewelry-making. Working with either require specialized equipment and technical skills. With this project, we'll mimic those sophisticated materials with polymer clay and mixed media to make a fabulous faux!

Polymer clay needs to be conditioned to make it flexible. Using a clay-conditioning machine is the quickest and easiest way.

1. Condition a package of Silver clay and a smaller amount of Pomegranate clay (about a quarter of a package).

We will create all except the flower using Silver clay.

2. Roll out a snake of clay about as thick as your little finger, and about 6 inches long.



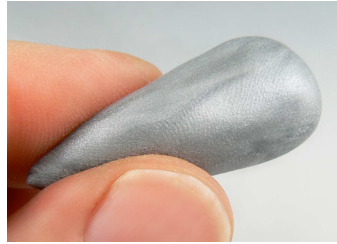
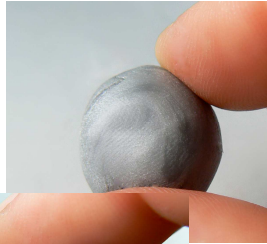
3. Curve it into a loop and press the ends together.



4. Crush a bit of aluminum foil into a loose ball and press it all over the surface of the clay to add texture.

5. This design calls for several leaves. Start by rolling out a ball of clay about the size of a grape.

6. Roll and pinch ball into a shape.

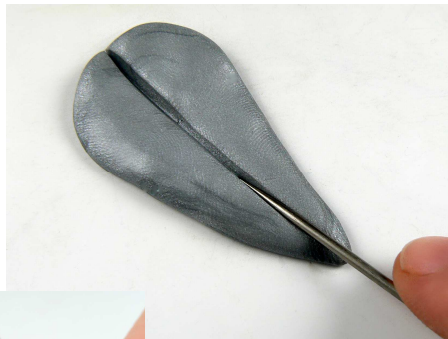


to make the teardrop



7. Flatten the teardrops with your fingers. Fingers are good, they leave a nice texture on the surface of the clay. Flatten it to about the thickness of a dollar coin.

8. With a the center of halfway



needle tool, imbed a line down the leaf. It should go about through the clay.

For this next favorite tools, the perfect

step, I prefer to use one of my the "Gotta' Have It" tool. It has edge for this part.



9. Hold the leaf on your fingertips. Use the tool to press an indentation into the edge of the clay and then continue the pressure while rolling the tool over the surface of the clay. This will create a notch on the edge and a line on the surface.

10. Repeat this all along the edge, creating three or four notches/lines.



11. Repeat on the other side. Remember to change the angle so that the lines all aim up toward the rounded top of the leaf.

12. With the blunt end of the tool, press an indentation into each section of the leaf.



13. Use your finger to press each indentation to soften the "mechanical" look.



14. With your needle tool, open up that centerline again.

15. Press the two halves of the leaf together by pressing on the backside, along both sides of the centerline. Press firmly.



16. Pinch and pull the top to create a little stem.



17. Make two more leaves – vary the sizes of each leaf a

bit, for variety.

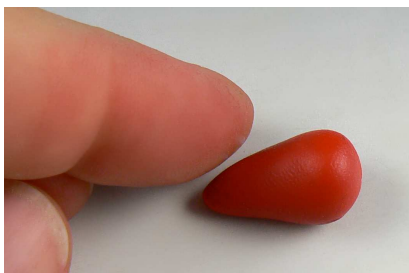


18. Press the leaves onto the looped base. Press the stems on firmly, and press the rest of the leaf on too, but don't mush anything. Add curves and flow to the leaves to make it have more movement and liveliness!

Use that bit of foil to add texture to the tops of the leaves.

19. Time for the flower. I chose a red clay because I love red enamel.

20. Roll out five balls of clay, each the same size – about the size of a large pea.

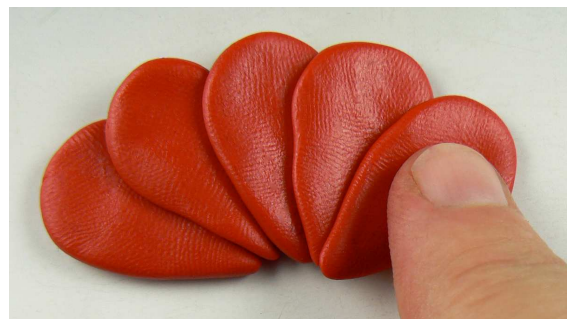


21. Shape the balls into teardrops.

22. Flatten each teardrop until they are

each about as thin as a dime.

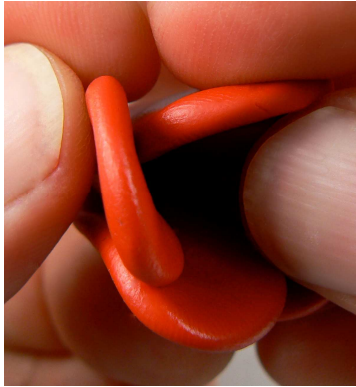
23. Lay the teardrops one on top of the other, spreading out into a fan shape.



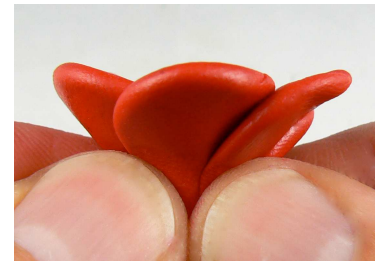


24. Make sure the teardrops are connected to each other by pressing firmly (but no mushing).

In order for the last teardrop to lay on top of the first and complete the circle, pick up the



fan and form it into an ice cream cone – now the last edge can overlap the first! Press the petals together to attach.

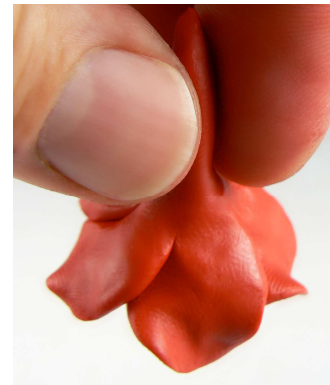


25. With your fingers press the base of the petals to bring them together and open up the flower.



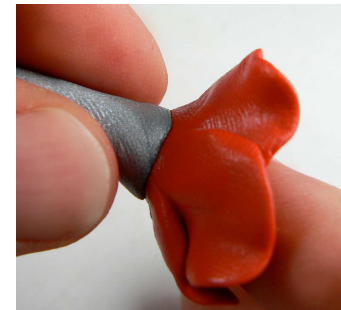
26. Pinch the edge of each petal to make it thinner, and give each petal a twist too, to add some movement and realism.

27. Hold the flower by the base, turn it upside down and twirl your fingers gently to make the 'stem' thinner. Pinch off the excess clay, to leave less than an inch of stem.



28. Set the flower down gently. From the silver clay, roll out a small oval and flatten it.

29. Wrap it around the stem, right up against the base of the petals. Roll the clay between your fingers to attach and thin it.



30. Tuck the flower, stem-first, in between the leaves and press it firmly onto the base clay.



31. Use a little piece of toilet paper to prop up the flower so it won't droop.

32. Let's add some stamens to the center of the flower! I used copper ball-tipped headpins (enamel is often done on copper metal, so the copper headpins are appropriate!)



In order for the pins to stay in, let's use a drop of glue on the tips. PolyBonder™ is perfect – it's a super glue, so it dries instantly, and it's specially made to work with polymer clay.



Brush a bit of glue onto each headpin, then immediately press them into place.

The sculpting is done!



33. Bake your piece (leave the toilet paper in place – it can go right into the oven, no problem!)

34. Bake your piece in a preheated oven at 275°F (130°C) for 45 minutes to an hour.

Always use an oven thermometer to make sure your oven stays at the correct temperature – don't trust the dial! Not all ovens are calibrated properly.

Once your piece has cooled completely, remove the toilet paper.

Now for the FAUX part of this project!

35. To mimic the look of enamel, dip a cotton-tipped swab into a small bit of black acrylic paint. Carefully rub black paint all along the edge of each petal.



36. Once the paint is dry, coat the flower, front and back, with a glossy glaze.





37. While the glaze is wet, use your finger to dab embossing powder (preferably black power) along the edges of the petals. Sprinkle a little randomly on the surface of the flower, and a little extra in the center.



Enamel often has an irregular surface with dark specks visible. This process will imitate that look.

The silver clay already mimics the look of silver metal, but let's really accentuate that by adding a metal coating. I recommend using Swellegant™ Silver Metal Coating.

38. Brush on a layer of the silver coating front and back on all the silver clay. Let that dry, then brush on a second coating. Let that dry.

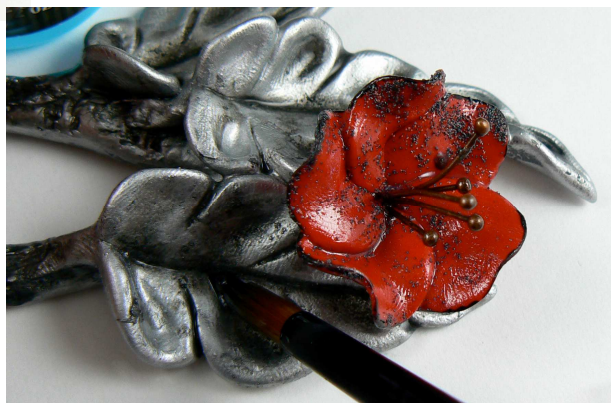


39. Brush one more layer of metal coating onto the front and sides. While that is still moist, brush on Swellegant™ Darkening Patina.



The reaction will happen immediately, oxidizing the metal coating to give it the look of old silver.

Once it's dark enough, blot off any excess fluid. You can also add additional Silver Metal Coating to any areas that got too dark.



40. Let everything dry thoroughly. It's dry to the touch within half an hour. Wait for several days to allow the coatings to completely adhere to the clay, then seal the metal coating with a metal sealer. I recommend Swellegant™ Clear Sealant.

String it up as the focal piece of a necklace and go impress your friends!



Christi Friesen is an award-winning artist and designer. She is the author of nine how-to books on working with polymer and mixed media. For more about her artwork, her books and projects, and her line of unique tools and supplies, visit her site: [www.ChristiFriesen.com](http://www.ChristiFriesen.com)