

BEADED COLLAR

Necklace



Easy to read instructions included.





Everything you need to make this Necklace.

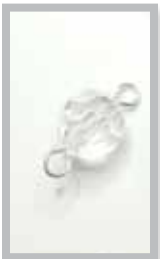
- S Charm Chain Silver, ZG-001-71327
- Metal Eye Pin Silver, ZF-001-12575
- Metal Clasp Lobster Silver, ZF-001-12566
- Bead Strand Glass Faceted Round 8mm, ZS-001-22706
- 14" Bead Strand Glass Faceted Round, ZS-002-18414
- Jump ring Silver, ZF-001-26528
- Round Nose Pliers
- Flat Nose Pliers
- Wire Cutters



Step 1:
Put eye pin through bead and make a simple loop at either end



Step 3:
Create a stand long enough to go around your neck



Step 2:
Make several 5mm connector beads to chain together



Step 4:
Repeat steps 2 and 3 turning beads as you go to create the Necklace to the desired length.



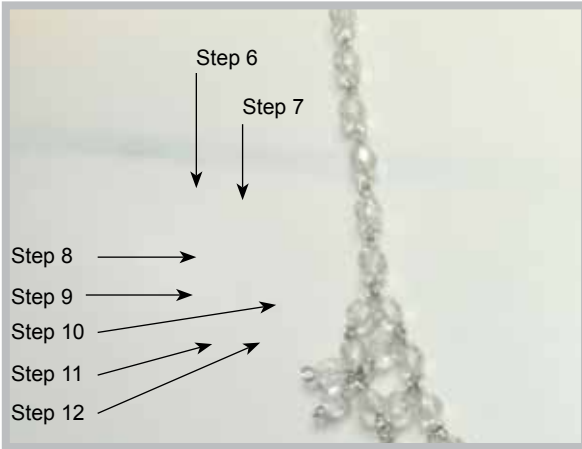
Step 5:
Connect 5 of the 5mm connector beads together to create a flower

Repeat steps 6 through 10 for second row.

Step 11:
Add 8mm bead to bottom of 5 mm bead

Step 12:
Add 8mm bead to bottom of 5 mm bead in center flower

Design your way:
Add flowers, drops or pendants to create your own style.



Step 6:
Find the middle of your necklace and add one connector bead to necklace chain.

Step 7:
Add the flower connector one over, from previously added connector bead.

Step 8:
Connect the left bead of flower to the bottom of previous connector bead. Repeat steps to end of necklace

Step 9:
Next row add connector bead at bottom of first added connector bead. Connect diagonal connector bead from flower to just added connector bead.

Step 10:
Add another 5mm connector bead in the same hole of second bead attach to the other diagonal bead in flower.

