

Woven elegance

Jewel-tone satin cord takes on a new look when accompanied by handsome chain and a coordinating Venetian-glass bead. Once you create your own version, you'll appreciate the versatility of this beautiful necklace. For work, wear it with a fine-gauge turtleneck and your favorite suit. For post-work fun, wear it with a wrap sweater, a circle skirt, and a pair of the season's new curvy heels. Regardless of the outfit, your choice is sure to be enchanting.



1. String a head pin with an accent bead or spacer. Then string a Venetian glass bead, accent bead, and spacers, as desired. Make the first half of a wrapped loop (Basic Techniques) above the top bead.

2. Attach the loop to the bail and complete the wraps.



3. Put tape, Fray Check, or nail polish on each end of the satin cord. Thread the cord through each large link in the chain.

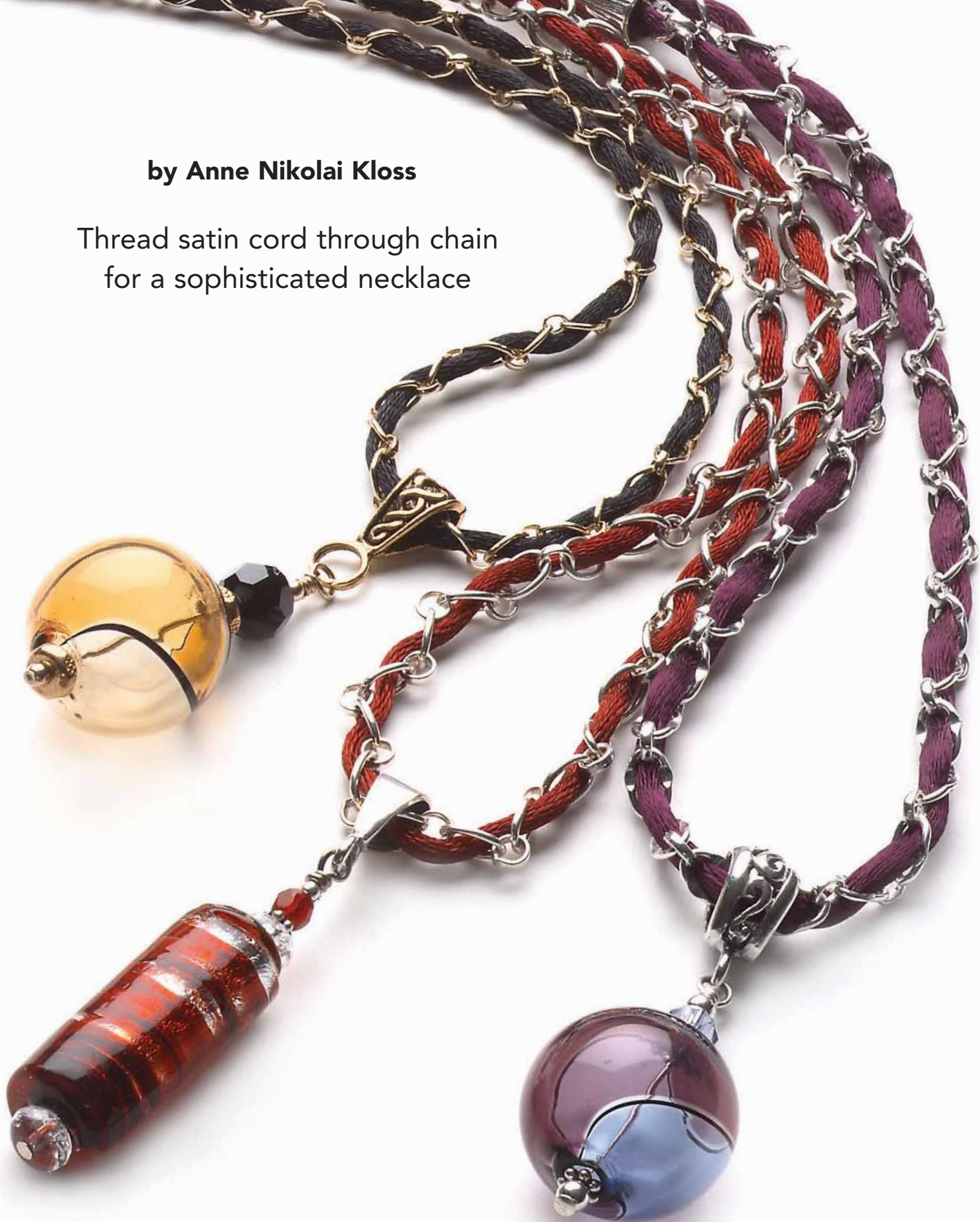
Determine the finished length of your necklace. (Mine are 17 in./43cm.) Cut the chain to that length, leaving a large link on each end. Trim each end of the satin cord approximately 1 in. (2.5cm) longer than the chain.



4. Center the pendant on the woven chain.

by Anne Nikolai Kloss

Thread satin cord through chain
for a sophisticated necklace





5. Cut a 4-in. (10cm) length of 22-gauge wire. Make the first half of a wrapped loop approximately 1½ in. (3.8cm) from one end. The loop must be large enough to accommodate the satin cord. Attach the loop to the last link on one end of the chain, then thread the cord through the loop.



6. With the shorter wire, tightly wrap the cord to the loop's stem. Trim the cord ¼ in. (6mm) past the wraps and apply Fray Check or nail polish to the end.



SupplyList

- 2 ft. (61cm) satin cord
- 2 ft. chain with large and small links (large links should accommodate the diameter of the cord)
- Venetian glass bead
- 1-3 crystal accent beads, 4-8mm
- bail with a hole large enough to accommodate the wrapped cord (Rio Grande, 800-545-6566)
- 2 3-4mm flat spacers
- 4 or more 3mm round spacers
- 2 beading cones, bottom openings large enough to fit over the wrapped cord
- 3-in. (7.6cm) head pin
- 8 in. (20cm) 22-gauge wire
- S-clasp and 2 soldered jump rings
- chainnose and roundnose pliers
- diagonal wire cutters
- scissors
- Dritz Fray Check or clear nail polish

7. String a cone and a round spacer onto the wire stem. Make the first half of a wrapped loop above the spacer.

8. Attach the loop to a soldered jump ring. Complete the wraps.

9. Loop one end of the S-clasp through the jump ring and close the clasp.

10. Check the fit. If necessary, cut the chain to shorten the necklace. Finish the other end as in steps 5 through 8. ♣

Contact Anne at annekloss@mac.com.