

# November: Lemon quartz

Take the long view with a skinny necklace that dips down to your navel. This version substitutes faceted lemon quartz for traditional topaz. Unfettered by a clasp, 42 inches of gold chain unite the beads. Loop the necklace around a second time for a more conservative look.

– Naomi Fujimoto

## SupplyList

### necklace

- 19–23 6mm beads (faceted rectangular lemon quartz from Art Gems, [artgemsinc.com](http://artgemsinc.com))
- 38–46 in. (1–1.2m) gold-filled half-hard 24-gauge wire
- 36–42 in. (.9–1.1m) gold-filled cable chain, 3mm links
- chainnose and roundnose pliers
- diagonal wire cutters

### earrings

- 2 6mm beads
- 2 1-in. (2.5cm) gold-filled head pins
- 5 in. (13cm) gold-filled half-hard 22-gauge wire
- 4 in. (10cm) gold-filled cable chain, 3mm links
- chainnose and roundnose pliers
- diagonal wire cutters





**1 necklace** • 1 Determine the finished length of your necklace. Divide that measurement by 2.25 and cut that number pieces of 1¾-in. (4.4cm) chain. (My necklace is 42½ in./1.1m, with a total of 19 bead units and 19 pieces of chain.) If you want a bead unit to fall in the center of the necklace, cut an odd number of chains.



**4** Continue attaching bead units and chains until the necklace is the desired length. End with a chain. Check the fit. If necessary, add or remove a bead unit or a chain, or trim an equal amount of chain from each end.



**2** Cut a 2-in. (5cm) piece of wire. Make the first half of a wrapped loop (Basics, p. 108) on one end. String a 6mm bead and make the first half of a wrapped loop on the other end. Make one bead unit for each piece of chain.



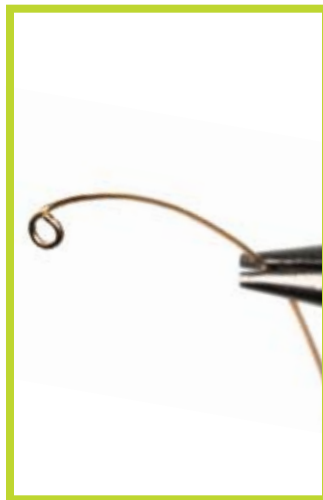
**3** Attach a chain to each loop on one bead unit. Complete the wraps.



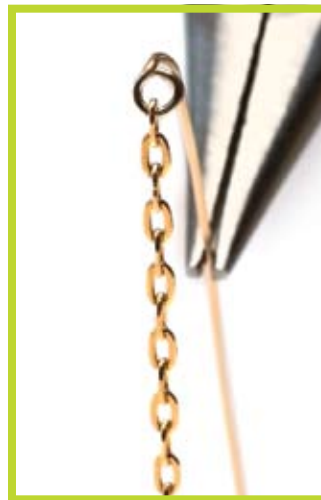
**5** Attach the loop on a bead unit to each end. Complete the wraps.



**1 earrings** • 1 String a 6mm bead on a head pin and make a plain loop (Basics, p. 108) above the bead. Cut a 2-in. (5cm) piece of chain. Open the loop on the bead unit and attach the chain. Close the loop.



**2** Cut a 2½-in. (6.4cm) piece of wire. Bend the wire so it curves slightly. Make a plain loop at one end. Using chainnose pliers, bend the loop down so it's at a 45-degree angle from the wire.



**3** Attach the chain to the loop on the wire. Make a second earring to match the first. ♦

