

Quick Stitch

Pillars of strength

Twisted bugle beads line up like Ionic columns when they're inserted between Ndebele herringbone stitches. Graduated lengths of seed beads lend a graceful taper to each end.

designed by **Jill Wiseman**

MATERIALS

bracelet 7½ in. (19.1 cm)

- 3g 12mm twisted bugle beads
- Japanese seed beads
5g size 8°
11g size 11°
- Fireline 6 lb. test
- beading needles, #10

stepbystep

Bracelet

- [1]** On a comfortable length of Fireline, leave a 6-in. (15cm) tail, and pick up four 8° seed beads. Sew back through all the beads and position them so you have two pairs side by side (**figure 1, a-b**). Work in ladder stitch (Basics, p. 114) until you have a strip that is four beads wide by two beads tall (**b-c**).
- [2]** Work two stitches in flat Ndebele herringbone (Basics and **figure 2, a-b**). Step up to complete the row (**b-c**). Work another row of herringbone.
- [3]** Work one herringbone stitch (**figure 3, a-b**). Pick up an 11°, sew through the next 8°, and work another stitch (**b-c**). Pick up four 11°s, and sew up through the last 8° added (**c-d**).
- [4]** Repeat step 3, but pick up two 11°s between stitches instead of one (**d-e**).

- [5]** Repeat step 3 seven times, increasing the number of 11°s picked up between stitches by one on each row until you have completed a row with nine 11°s between the two herringbone stitches.
- [6]** Work as in step 3, but replace the group of 11°s with an 11°, a 12mm bugle bead, and an 11° (**figure 4, a-b**).
- [7]** Work one herringbone stitch (**b-c**). Pick up an 11°, sew through the bugle picked up in the previous stitch, and pick up an 11° (**c-d**). Work the next herringbone stitch, add four 11°s, and step up (**d-e**).
- [8]** Repeat steps 6 and 7 until the bugle bead section is the desired length. To determine how long the bugle bead section should be, first add the length of the clasp to the length of the two 11° end sections of the bracelet, then subtract that sum from your wrist

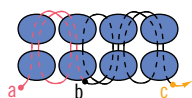


FIGURE 1

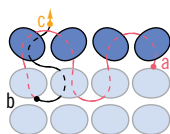


FIGURE 2

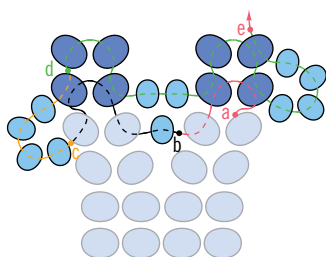


FIGURE 3

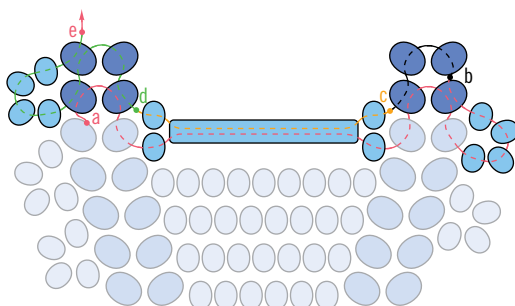


FIGURE 4

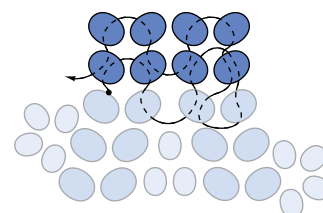


FIGURE 5



The bugle beads in the brown bracelet are 2.7mm in diameter, while the others are 2mm in diameter. Either size works fine in this design.

length. The clasp will require approximately 1 in. (2.5cm). The herringbone rows with 11^os between them are approximately 1¼ in. (3.2cm) per side, or 2½ in. (6.4cm) total. For a 7½-in. (19.1cm) bracelet, the bugle bead section should be 4 in. (10cm) long. Add thread (Basics) as needed.

[9] Work a section using 11^os between the stitches, as in step 3. Begin with nine

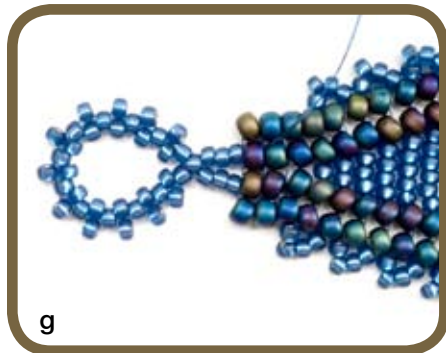
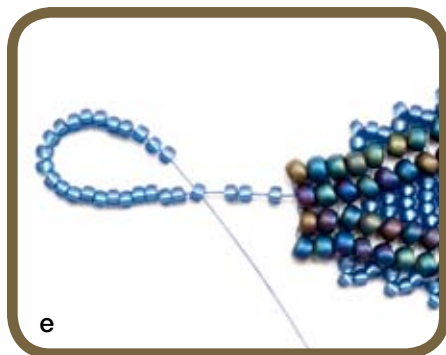
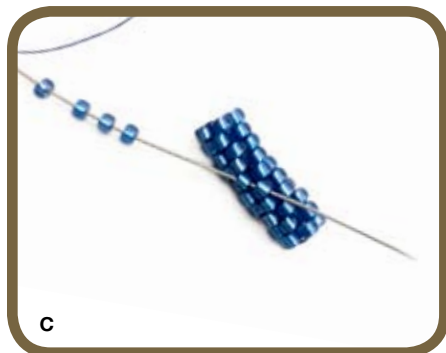
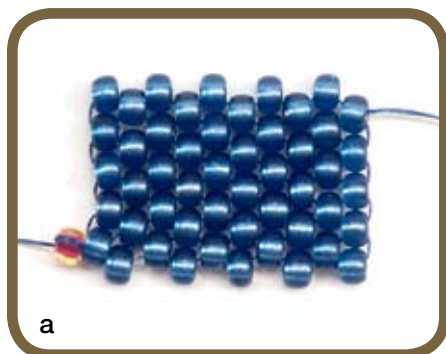
11^os, and decrease the number of 11^os used between stitches by one bead per row until you have completed a row with one 11^o between stitches.

[10] Work two more rows of herringbone, as in step 2 (figure 5). Sew through the last row in ladder stitch to straighten the beads. Secure both tails with a few half-hitch knots (Basics) between beads, and trim.

EDITOR'S NOTE:

While it's not necessary to finish the ends of the toggle bar, it adds a professional touch to the clasp. To do so, exit any 11^o seed bead at one end of the bar, and sew an 8^o over the open end. Retrace the thread path a few times, and repeat at the other end.

Quick Stitch



Clasp

[1] On 2 ft. (61cm) of Fireline, leave a 6-in. (15cm) tail, and pick up a stop bead (Basics) and ten 11[°]s. Work in flat, even-count peyote stitch (Basics) to make a strip that is ten beads wide and ten rows tall (**photo a**). The completed strip will have five beads on each flat edge.

[2] Remove the stop bead, and zip up (Basics) the jagged edges (**photo b**) to form a tube. Secure the tails with a few half-hitch knots, and trim.

[3] Secure 18 in. (46cm) of Fireline at one end of the bracelet, exiting the second 8[°] in the end row. Pick up four 11[°]s, and sew diagonally through two 11[°]s at the middle of the peyote toggle bar (**photo c**). Pick up four 11[°]s, and sew through the third 8[°] in the end row (**photo d**). Retrace the thread path two or three times, secure the tails, and trim.

[4] Secure 18 in. (46cm) of Fireline at the other end of the bracelet, exiting the second 8[°] in the end row. Pick up approximately 27 11[°]s, or enough 11[°]s to form a ring around the toggle bar. Sew through the fourth 11[°] picked up (**photo e**), pick up three 11[°]s, and sew through the third 8[°] in the end row (**photo f**).

[5] If desired, work a row of peyote stitch around the loop (**photo g**). Retrace the thread path two or three times, secure the tails, and trim. ●

Kits are available for the brown bracelet, p. 51. To buy a kit, contact Jill Wiseman at jill@tapestrybeads.com or visit tapestrybeads.com.

